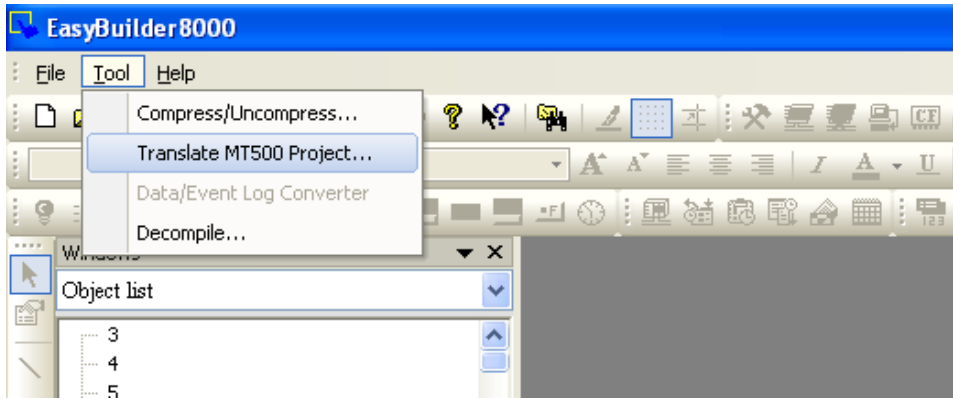
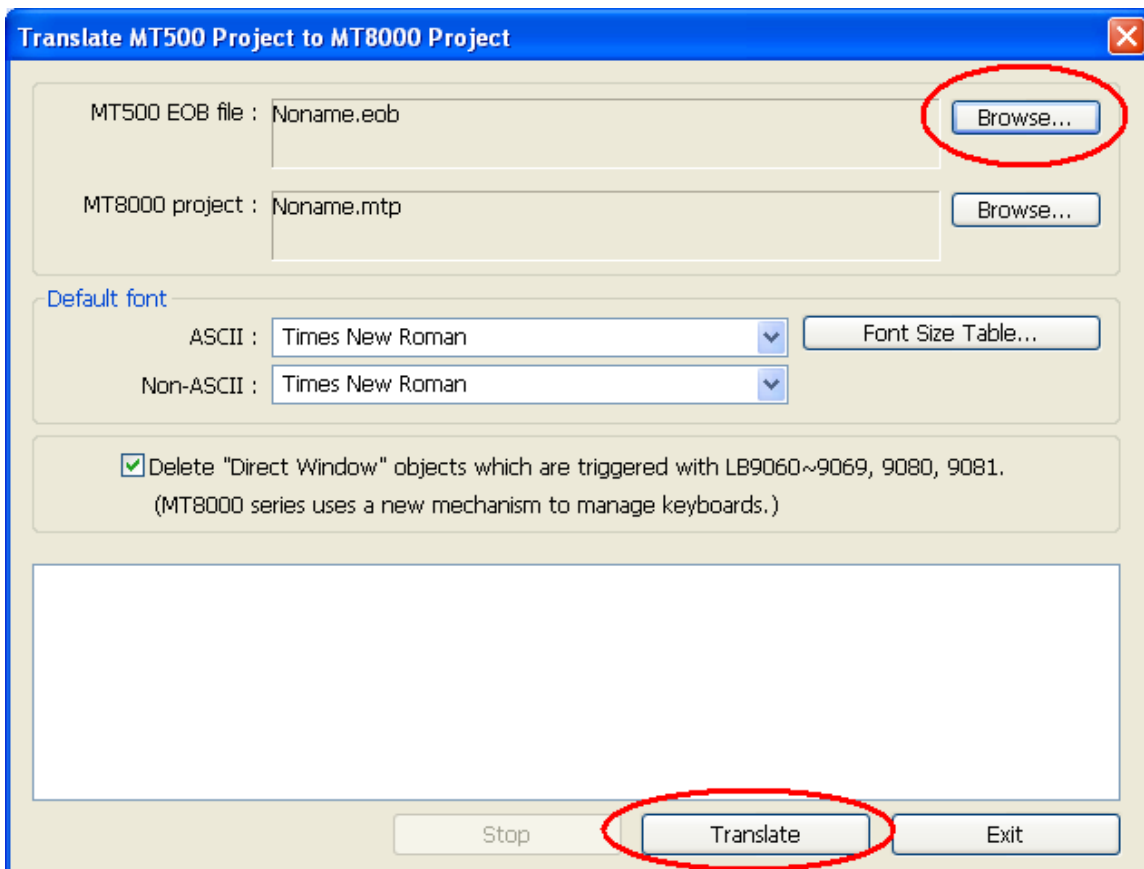


Translate MT500 Project to MT8000

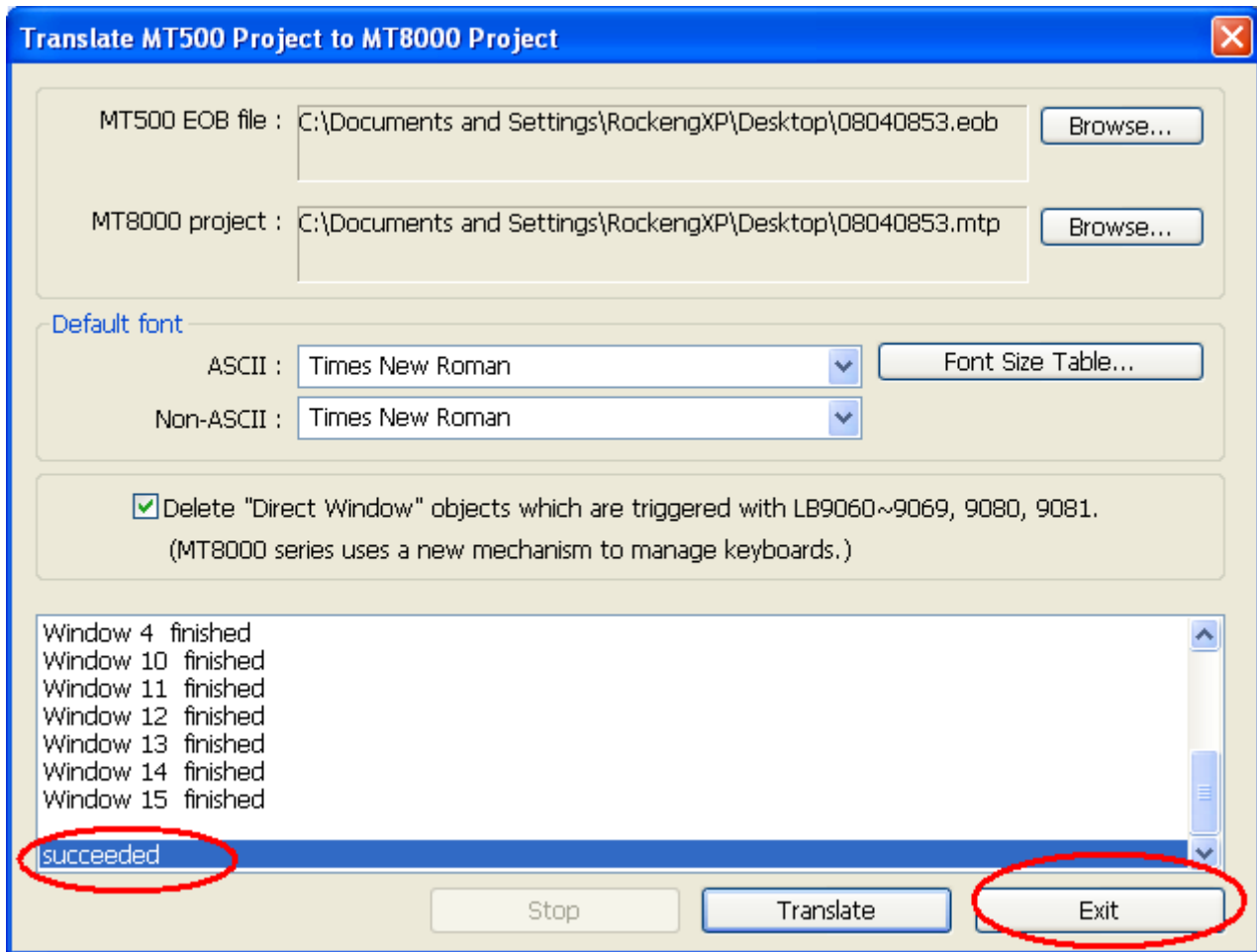
1. Run EasyBuilder8000, select “Tool / Translate MT500 Project”



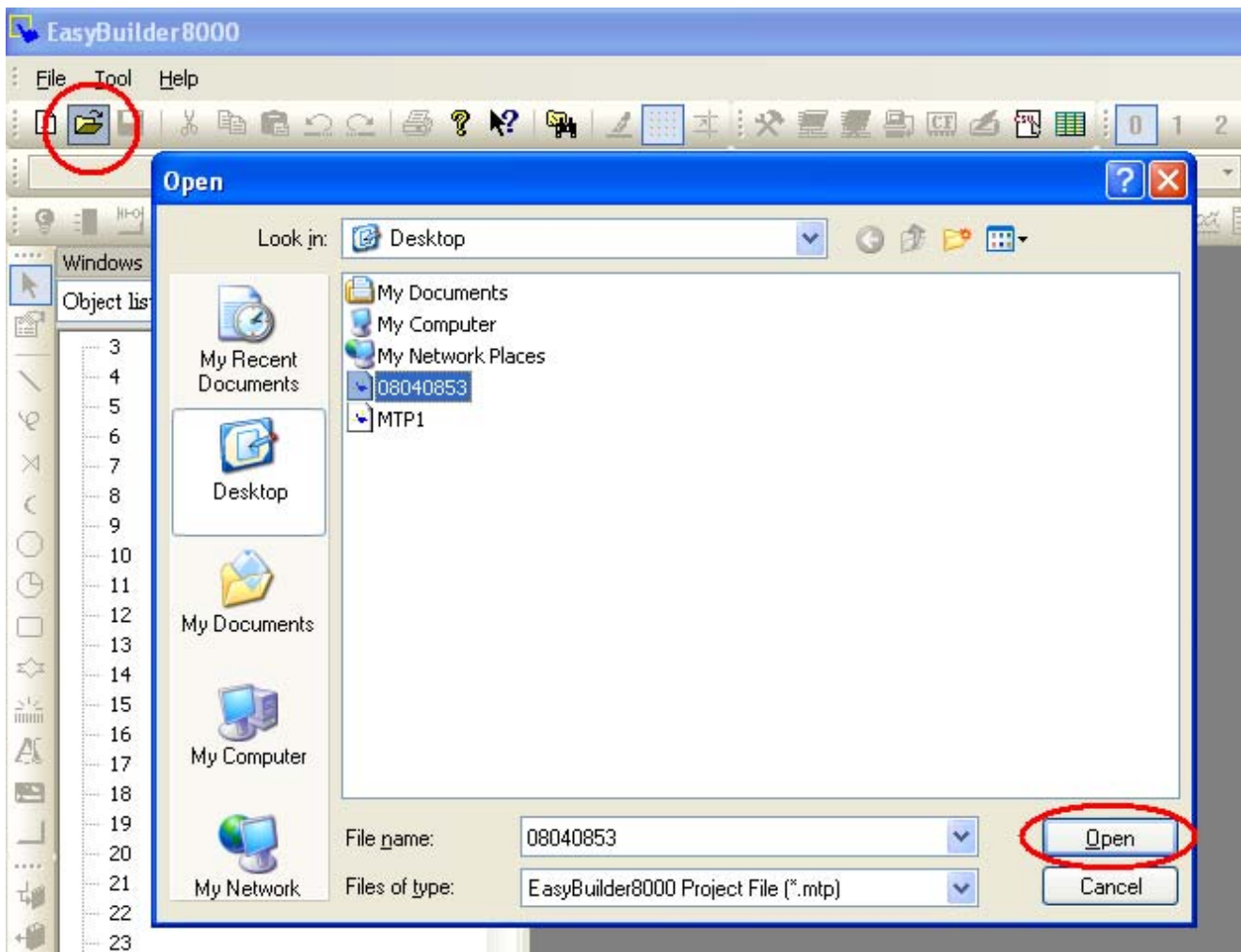
2. Browse the “MT500 EOB file”, select the *.eob file and click “Translate”.



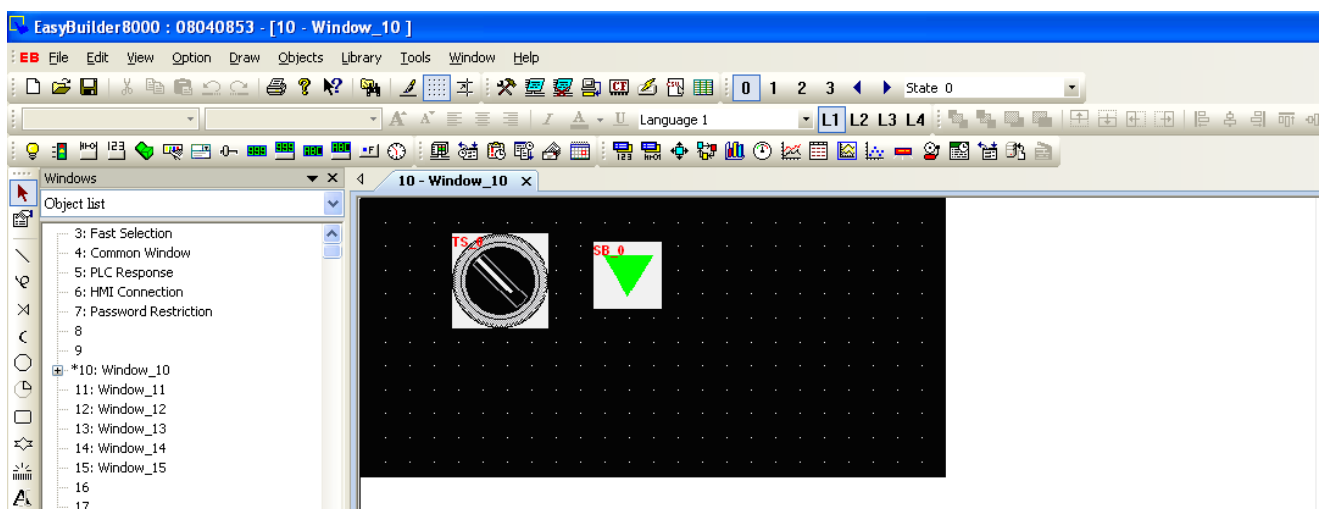
- When the “succeeded” message is displayed in the dialog, click “Exit”.



4. In open file dialog, select the *.mtp file and click “Open”.



5. The selected project file is a MT8000 project which the user is able to edit.



Notice: Before translation, please check that if EB8000 support the corresponding PLC type. (check out “Edit / System Parameters / Device / New / PLC type“)