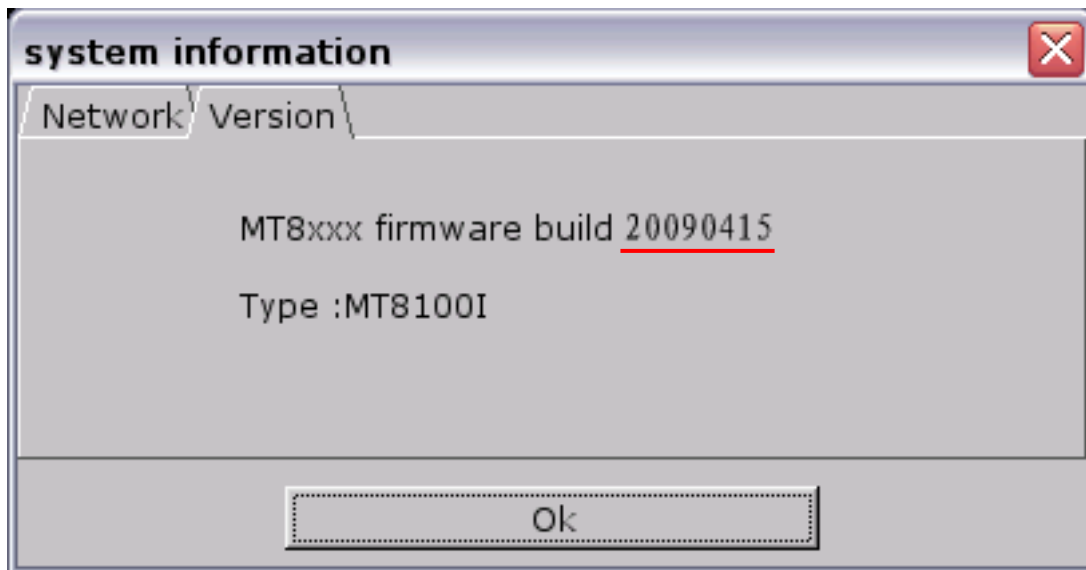


i Series Touch Panel Supports User-defined Startup Screen

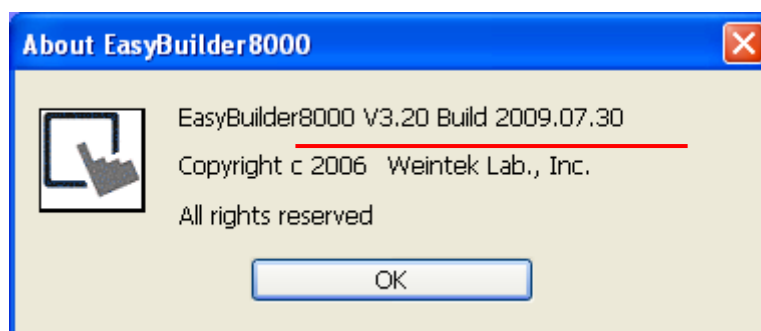
i series touch panel supports user to define their own startup screen, such as enterprise trademark logo, etc. The following steps introduce how to apply this function:

Notice: this function is provided by i series only.

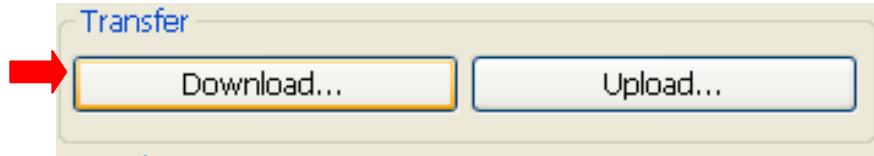
1. Firmware version: 20090415 or later:



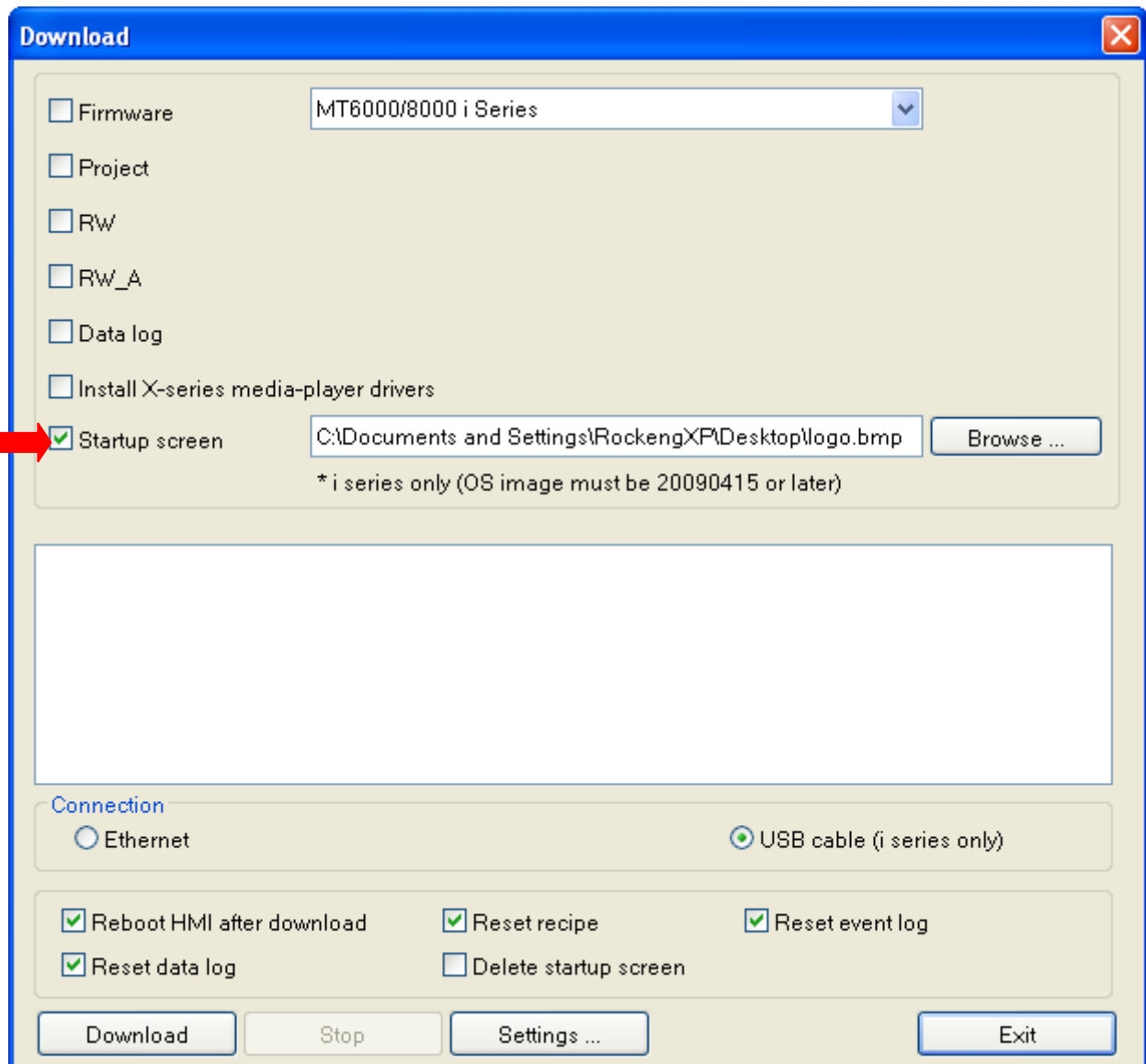
2. Software version: V3.20 2009.07.30 or later:



3. Run the Project Manager program, click "Download" button:



- When the "Download" window shows up, select "Startup screen", and click "Browse..." button. Choose an image which will be used as startup screen on the HMI.



- Click "Download" button. After finishing download process, restart touch panel HMI. The startup screen is already changed to the image downloaded by user.

