

## i Series Touch Panel Screen Supports Portrait Display

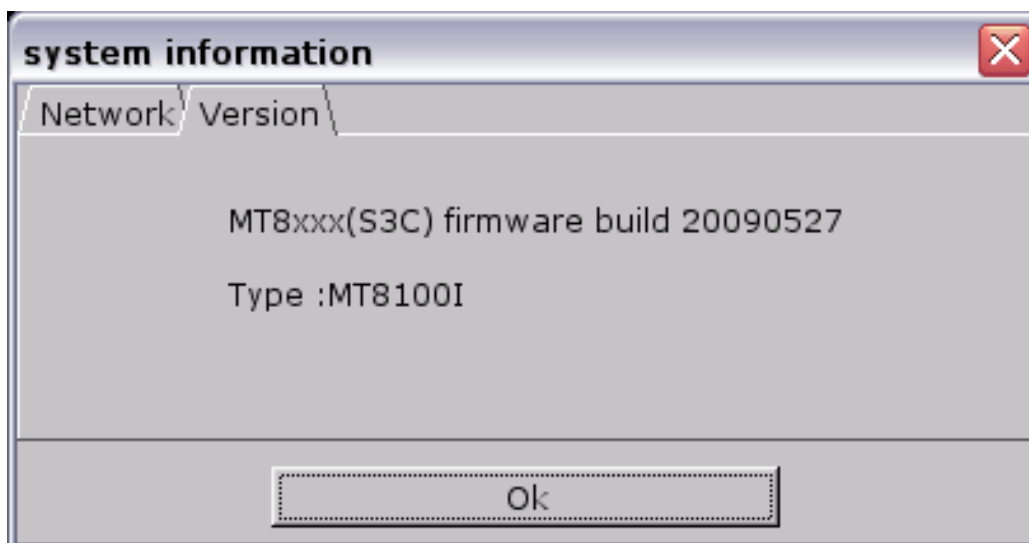
i series touch panel screen supports portrait display. The following steps introduce how to apply this function.

Notice: this function is provided by i series only.

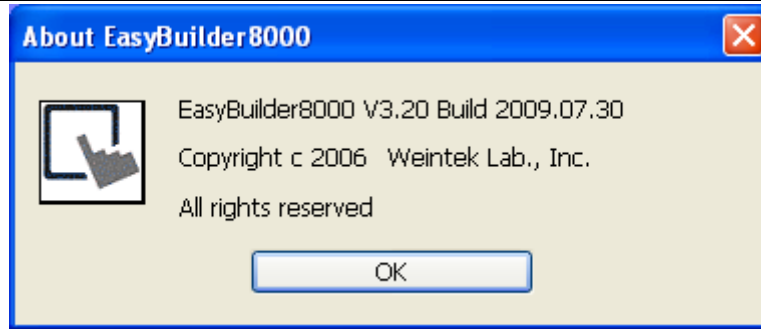
1. This picture shows an example of landscape display on MT8100i;



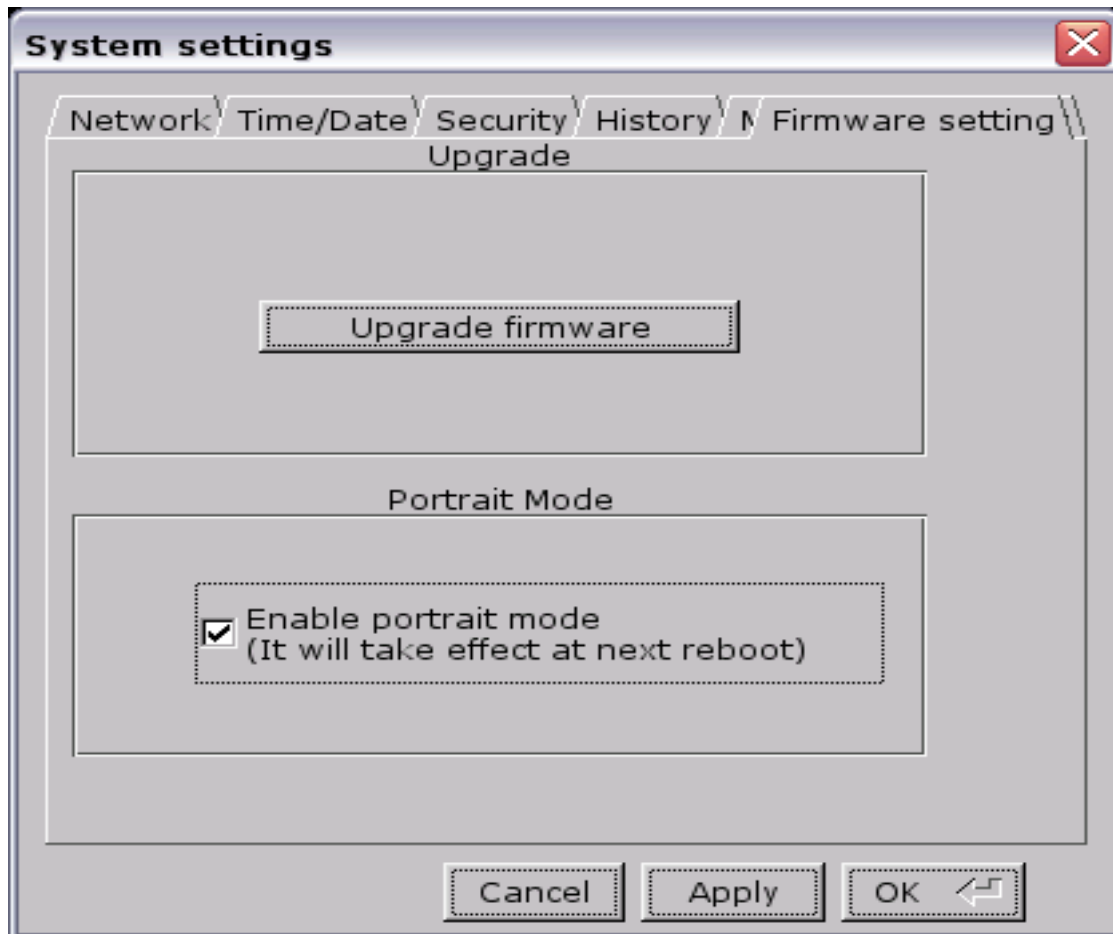
2. Firmware version: 20090527 or later:



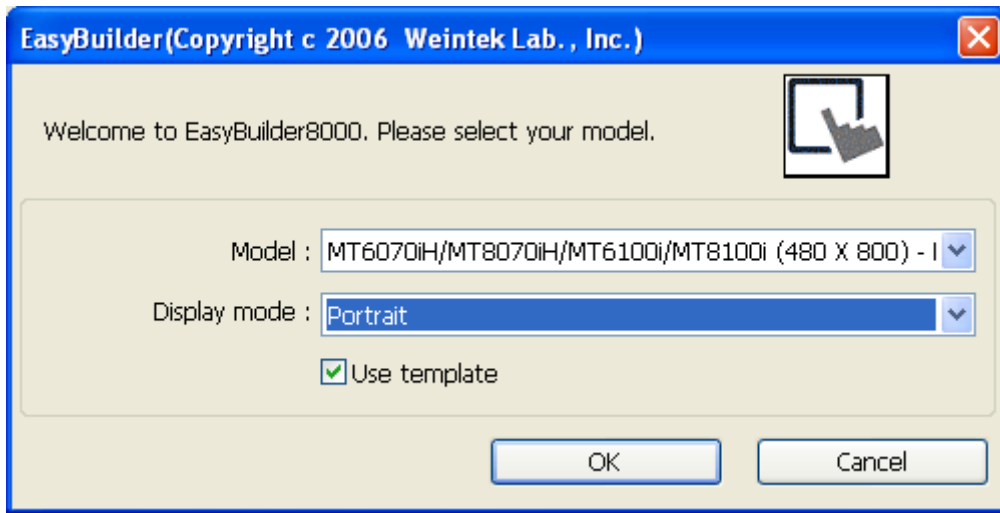
3. Software version: V3.20 2009.07.30 or later:



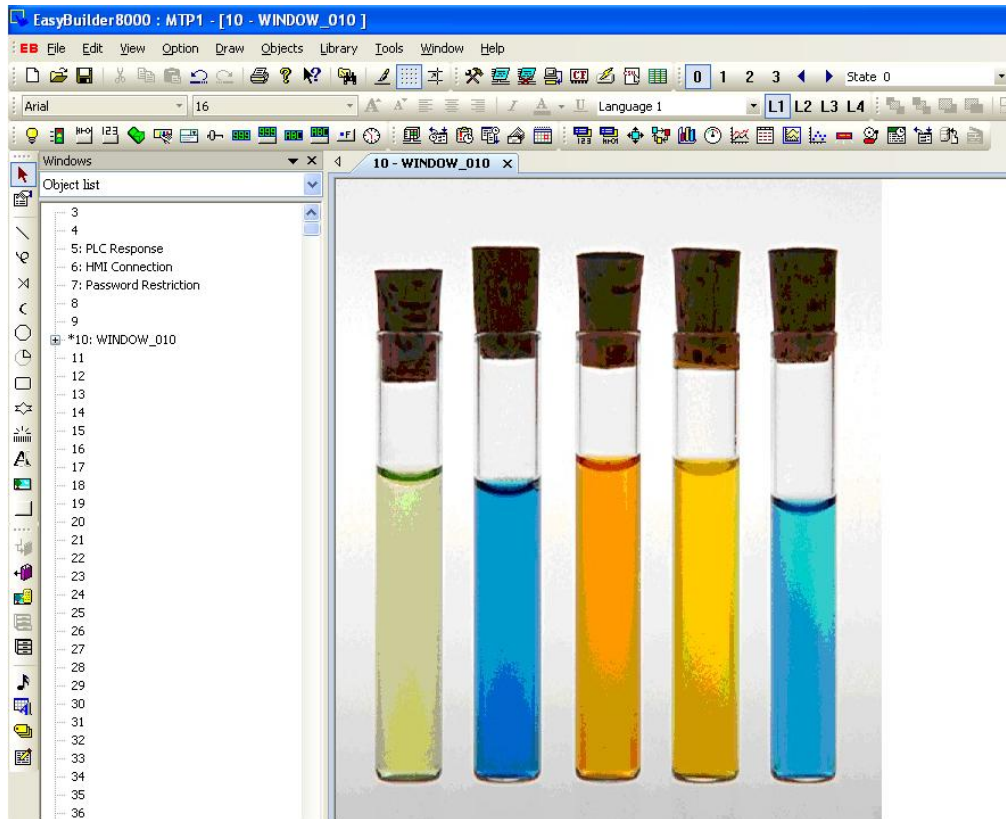
4. First, setup the HMI by selecting “Enable portrait mode” under System Settings-Firmware setting tag. Then restart the HMI;



5. Run the EasyBuilder 8000 program and click File/New to create a new project file. Choose i series model name from the “Model” pull-down list and set the “Display Mode” to “Portrait”. Click “OK” button;



6. A new project file is created as follows:



7. Download firmware to the touch panel HMI. The HMI now displays in portrait orientation.

